

PERFORMANCE

Display Size
21.5"

View Area
476.06x267.79mm

Panel
VA

Aspect Ratio
16:9

Resolution
1920x1080

Pixel Pitch
0.248x0.248 mm

Dot / Pixel Per Inch
102 dpi

View Angle (H / V)
178° / 178°

Response Time
4 ms (Extreme mode) / 6 ms (Typical mode)

Color Support
16.7 Million

Refresh Rate
75 Hz

Brightness
250 nits

Contrast Ratio
3000:1

Color Gamut
72% NTSC

Anti-glare
Yes

Curvature
None

Camera
None

Microphone
None

Speakers
None

Power Consumption (Typical / Maximum)
15W / 19W

Power Adapter
Integrated

Touchscreen
None

Smart System

None

DESIGN

Stand
Tilt Stand

Case Color
Raven Black

Side Bezel Width
2 mm

Dimensions with Stand (HxWxD)
405.1x489.3x173.1 mm / 15.95x19.26x6.81 inches

Weight (Including Stand)
3.14 kg / 6.92 lbs.

Mounting
Supports VESA mount 100mm

ThinkCentre® M Series Support
Tiny, Nano Support

CONNECTIVITY

USB Port
None

Video Connector
1x HDMI® 1.4, 1x VGA

Network Connectivity
None

SERVICE

Base Warranty
3-year

CERTIFICATIONS

Environmental Certification
ENERGY STAR® Certified, TCO 8.0, TCO Edge 2.0, EPEAT™ Gold, RoHS

Ergonomic Certification
TÜV Rheinland® Low Blue Light, TÜV Rheinland Flicker Free

Sync Technology
AMD FreeSync™

SOFTWARE

Operating System
Support Windows® 7, Windows 10

ACCESSORIES

Video Cables

HDMI® cable

MODEL

Announce Date : 2021-03-09

EAN / UPC / JAN : 0195713231602 / 195713231602 / None

Codi 92771



comercial  *paperera*

MATERIALS I SERVEIS PER A L'OFICINA

Tot i molt a prop

972 406 301

comandes@comercialpaperera.com

www.comercialpaperera.com

C/Can Pau Birol, 14. Pol. Ind. Mas Xirgu. 17005 Girona.

· Lenovo reserves the right to change specifications or other product information without notice.
· Product image on this page is a sample, it may not match the real color of this model

Premium Care - Advanced Support from Real People. Real Fast.



REAL PERSON

Choose how you want to reach us - through the phone, chat or email - our expert technicians will take care of you.



REAL FAST

Highly trained technicians will provide you real-time solutions, whatever the issue, on your first contact. If needed, our team will schedule an onsite visit for the next business day.



HASSLE FREE

'Getting started' and 'how-to' assistance for hardware and software. Easy solutions that are simple to reach - that's how Premium Care delivers you the ideal support experience.



PC HEALTH CHECK

Free annual PC Health Check that allows our experts to spot issues before you do so they can resolve them quickly and help you avoid PC problems.

Accidental Damage Protection - Protection of your PC from the unexpected.

Experience shows that a significant portion of devices may be damaged (and not covered under warranty) in the first three years. Lenovo's Accidental Damage Protection service covers accidents beyond the system warranty such as drops, spills, bumps and even electrical surges. Make sure your new device has maximum protection, avoid unplanned costs and get peace of mind.

Base Warranty – Included with the systems you purchase, default 1- or 3-year coverage window.

Warranty Extensions & Upgrades – Service and protection that's right for your circumstances.

- Pick Up & Return Courier
- Onsite Support
- Technician Installed Customer
- Replaceable Unit Service
- International Warranty Upgrade

Lenovo may not offer the products, services or features discussed in this document in all regions. Lenovo may withdraw an offering at any time. Consult your local representative for information on offerings available in your area. Lenovo reserves the right to change specifications or other product information without notice. Lenovo is not responsible for photographic or typographical errors. Lenovo provides this publication "as is" without warranty of any kind, either express or implied, including the implied warranties of merchantability or fitness for a particular purpose.

comercial  **paperera**

MATERIALS I SERVEIS PER A L'OFICINA

Tot i molt a prop

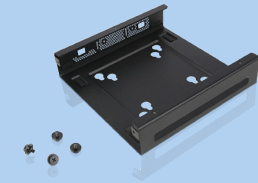
972 406 301

comandes@comercialpaperera.com

www.comercialpaperera.com

C/Can Pau Birol, 14. Pol. Ind. Mas Xirgu. 17005 Girona.

Recommended Accessories



ThinkCentre Tiny VESA Mount II

4XFON03161

The ThinkCentre Tiny VESA Mount II is a unique design specific to house the Tiny PC while featuring the universal VESA mount configuration. The VESA standard enables this mount to attach to anything that is VESA comp...



Kensington MicroSaver 2.0 Cable Lock from Lenovo

4XEON80914

Protect your device. Lenovo offers the latest standard in device security - the MicroSaver 2.0 Cable Lock From Lenovo. Engineered to be the smallest, strongest lock for laptops and other devices, the MicroSaver 2.0 re...

Lenovo

PSREF
Product Specifications
Reference