

UPDATING METHOD LD550 and LD550CB

FA62441-FA62441CB

6 cells

Download, clicking onto following link to obtain the last updating method for LD550 counterfeit detector :
<http://www.reskal.com/category/maj/>

Warnings ! It exists 2 kinds of LD550 machines

To make the difference between these 2 versions, it is necessary to check the number of detection cells

Pen the machine upper cover to count the cells.

A) 6 detection cells onto lower part

Details :
4 white cells (LED) et 2 black cells
=
old model (before 01 Sept 2015)



LD550 lower part of old model

You have to use following file :

A) **ld550 .fa62441._2258LED_C20_EUR+CHF_2017-16-02.. 6 cellules.UPL**

B) 8 detection cells on lower part

Details :
6 black cells and 2 white cells (LED)
=
new version since 02 sept 2015



LD550 lower part of new model

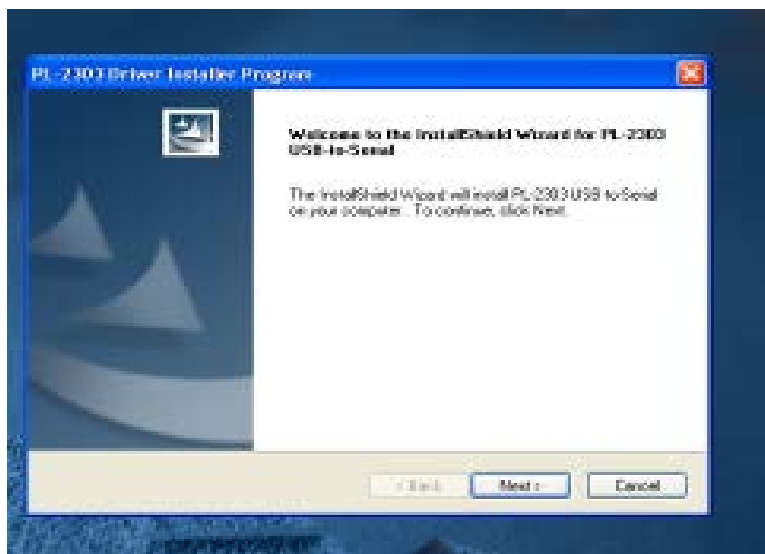
It will be necessary to use following file (only available on demand, only if there is a black screen after updating) :

LD550(FA62441 CB)(DP-2258LED_VC)_C20(n001)-EUR(007)-CHF(008)-(2017-16-02) 8 cellules .UPL

- 1- Select updating for LD550
- 2- Record files onto your computer. **Be carefull, downloaded files are zipped and i twill be necessary to unzip them before the beginning of the updating.**
- 3- When file is unzipped, open it by double clic.

The are 4 documents.

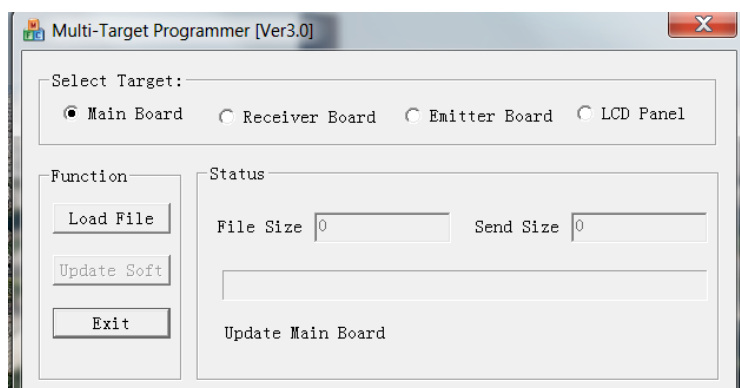
- 4- Install
« **PL2303_Prolific_DriverInstaller_V130.exe** »
clicking 2 time on it and follow
the method till the end.
- 5- Close the windows, clicking onto « finish »



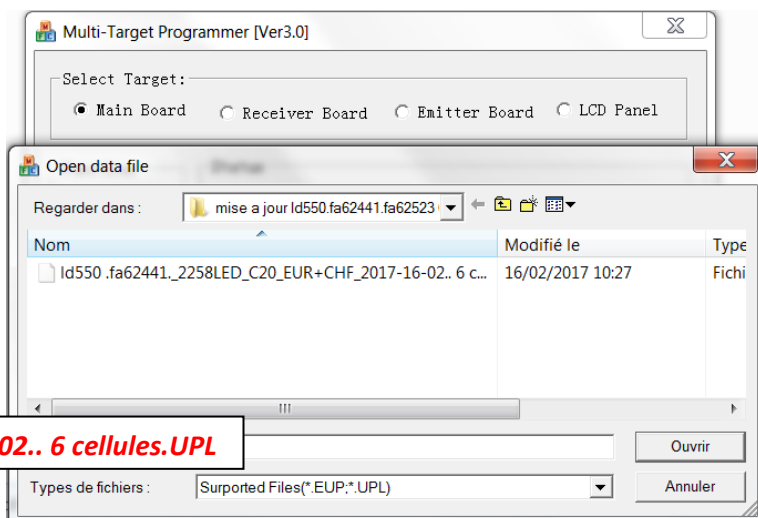
End of the first step.

- 6- Double clic onto « **Multi-Target Programmer_V3.0.Exe** »

A windows open (document is parametered to proceed to the updating, do not amend anything)

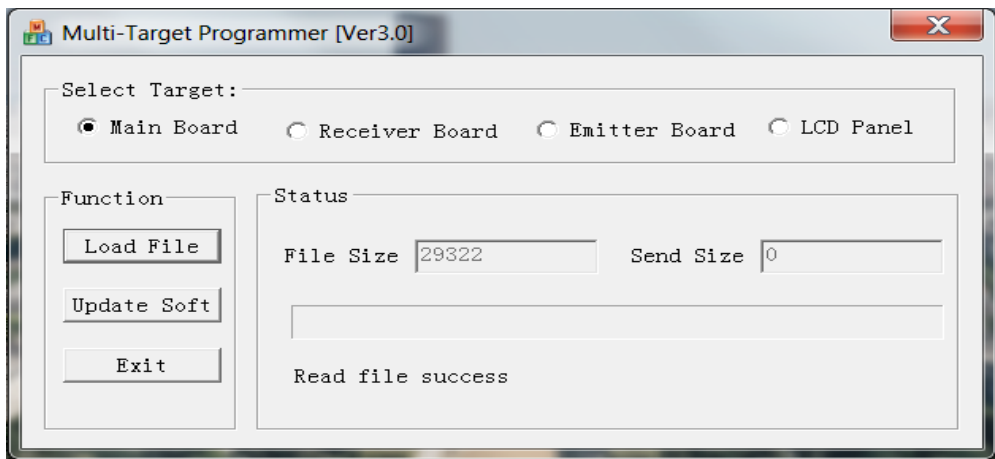


- 7- Clic onto « LoadFile ». New windows opens
- 8- Select with the scrolling menu, following file :



Id550 .fa62441._2258LED_C20_EUR+CHF_2017-16-02.. 6 cellules.UPL

- 9- Double click on it. Windows closes. Near « File Size » following number appears : **29322**. Updating is ready.



- 1 Switch off LD550 machine.
- 2 Connect LD550 to PC with USD cable, and the mini USB onto the LD550 machine.
- 3 Press « REP/DIR » and « CLR » keys in the same time, and switch on LD550 machine.
Screen will show hyphens. Release keys.



- 4 Click onto « Update Soft ». Progress bar appears and runs. LD550 detector will switch off itself after 100% reached.
Nota : in case the progress bar blocked, change your USB port and click again onto « Update Soft ».

Updating is ended.

- 5 Make a test with new banknotes 5 . 10 and 20 .50euros.

Troubleshooting

Attention

Some computers may not accept driver (driver) installation for the following reasons: network security ... server. ... Antivirus and ... hardware incompatibilities

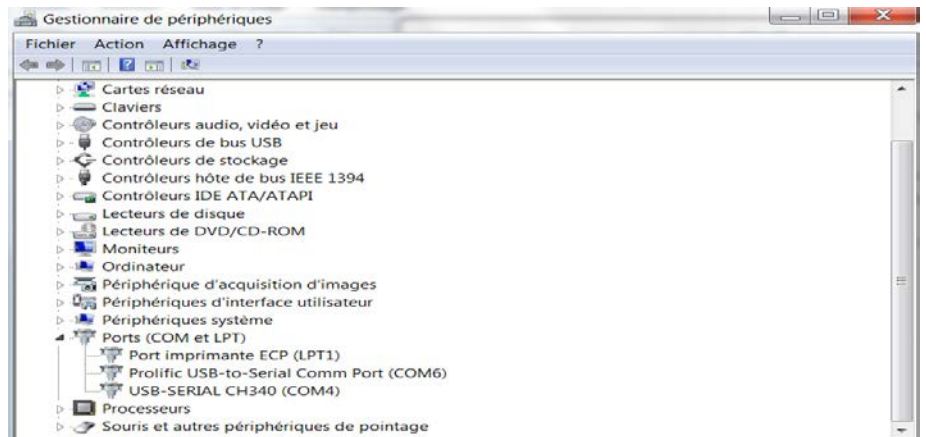
If this is the case to be sure, check in the device manager if the com and lpt ports exist.

Attention

The detector only appears in the device driver when it is connected to the computer!!!!

If the com and lpt ports exist
In the Device Manager
Verify that usb-to serial exists.
Opposite example
Otherwise restart the installation
Of drivers (pilot) pl2303.

Or unplug the detector and
reconnect the detector on a different
USB.



It is also possible that the update cable is not a data transfer cable (do a test with another USB mini USB cable
Caution: the detector only appears when it is connected to the computer.

Aftersales contact : Debiaune David

Phone : SAV : 04.73.51.78.20

Mobile : 06.50.13.34.46

Ffax : 04.73.51.44.35

Mail : david.debiaune@safetool.fr / sav@safetool.fr

Adress : SAFETOOL SAS - ZI chez cotte - 63650 la Monnerie le Montel - France

